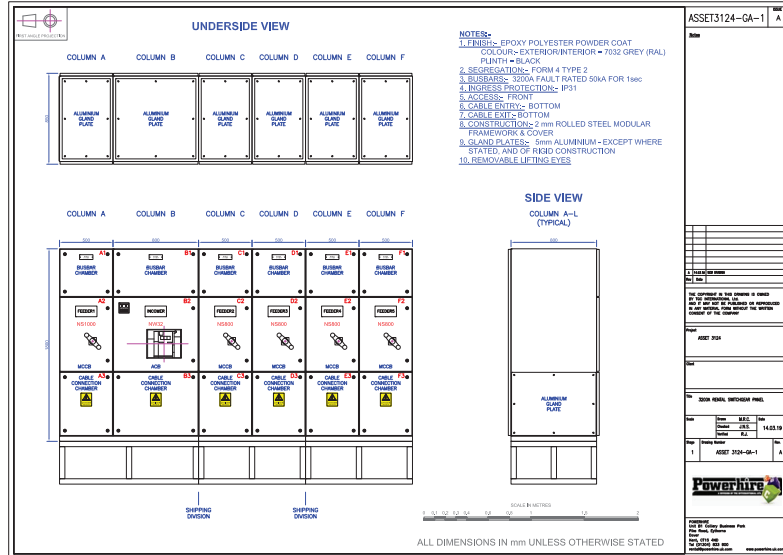


DISTRIBUTION

Model: DIST3200-3L



Switchboard Data

		50Hz	60Hz			
VOLTAGE	VOLTS	231/415	TBA	COLOUR	Container Switchboard	RAL9003 RAL7032
MAIN BUS BAR RATING	AMPS	6300	TBA	MAXIMUM OPERATING AMBIENT		35°C
FORM RATING	Form Type	4 2		DIMENSIONS (mm) (Switchboard only)	DEPTH WIDTH HEIGHT WEIGHT	850 3,300 2,300 TBA
IP RATING	IP	31				
SWITCHBOARD kA RATING	kA	50kA for 1 second		DIMENSIONS (mm) (Switchboard & crash frame)	DEPTH WIDTH HEIGHT WEIGHT	1,000 3,600 2,500 2,280
NUMBER OF POLES		3 Phases, Neutral & Earth Bar		DIMENSIONS (mm) (Switchboard & Enclosure)	DEPTH WIDTH HEIGHT WEIGHT estimate	2,440 6,060 2,590 5,900
CABLE ENTRIES: Incomer ACB A2 Feeder 1 MCCB Feeder 2 MCCB Feeder 3 MCCB Feeder 4 MCCB Feeder 5 MCCB		Bottom Entry via Cubicle A3 Bottom Entry via Cubicle B3 Bottom Entry via Cubicle C3 Bottom Entry via Cubicle D3 Bottom Entry via Cubicle E3 Bottom Entry via Cubicle F3		LIFTING ARRANGEMENTS:		
				Switchboard Only: 4 x Top Lifting Lugs (on sub frame) Container: 4 x Top or Bottom Container Corner Pockets		✓ 40mm ✓

SWITCHGEAR

Model: DIST3200-3L

Main Switchgear Details

BREAKER	MANUFACTURER	RATING		CONNECTION METHOD	
Incomer		Current	3,200 Amps	Phases	M12 Bolt - Up to 10 load cables per phase
		Fault kA	65kA	Neutral	M12 Bolt - Up to 10 load cables
		# Poles	4	Earth	M10 Bolt - Earth Bar external to panel
	Model NW32 H1	Notes:			
Trip Type Micro 5.0A					
Feeder 1		Current	1,000 Amps	Phases	M12 Bolt - Up to 4 load cables per phase
		Fault kA	50kVA	Neutral	M12 Bolt - Up to 4 load cables
		# Poles	4	Earth	M10 Bolt - Earth Bar external to panel
	Model NS1000 N4	Notes:			
Trip Type Micro 2.0					
Feeder 2		Current	1,000 Amps	Phases	M12 Bolt - Up to 8 load cables per phase
		Fault kA	50kVA	Neutral	M12 Bolt - Up to 8 load cables
		# Poles	4	Earth	M10 Bolt - Earth Bar external to panel
	Model NS1000 N4	Notes:			
Trip Type Micro 2.0					
Feeder 3		Current	1,000 Amps	Phases	M12 Bolt - Up to 8 load cables per phase
		Fault kA	50kVA	Neutral	M12 Bolt - Up to 8 load cables
		# Poles	4	Earth	M10 Bolt - Earth Bar external to panel
	Model NS1000 N4	Notes:			
Trip Type Micro 2.0					
Feeder 4		Current	1,000 Amps	Phases	M12 Bolt - Up to 4 load cables per phase
		Fault kA	50kVA	Neutral	M12 Bolt - Up to 4 load cables
		# Poles	4	Earth	M10 Bolt - Earth Bar external to panel
	Model NS1000 N4	Notes:			
Trip Type Micro 2.0					
Feeder 5		Current	1,000 Amps	Phases	M12 Bolt - Up to 4 load cables per phase
		Fault kA	50kVA	Neutral	M12 Bolt - Up to 4 load cables
		# Poles	4	Earth	M10 Bolt - Earth Bar external to panel
	Model NS1000 N4	Notes:			
Trip Type Micro 2.0					
Spare Cubicle		Current		Phases	
		Fault kA		Neutral	
		# Poles		Earth	
	Model NS1000 N4	Notes:			
Trip Type Micro 2.0					

SWITCHGEAR

Model: DIST3200-3L

SMALL POWER DISTRIBUTION COMMANDO SOCKETS

TO BE CONFIRMED

CONTROL SYSTEM

FOR DETAILS OF CONTROL
FUNCTIONS PLEASE SEE
SWITCHBOARD CONTROL
WIRING DIAGRAMS